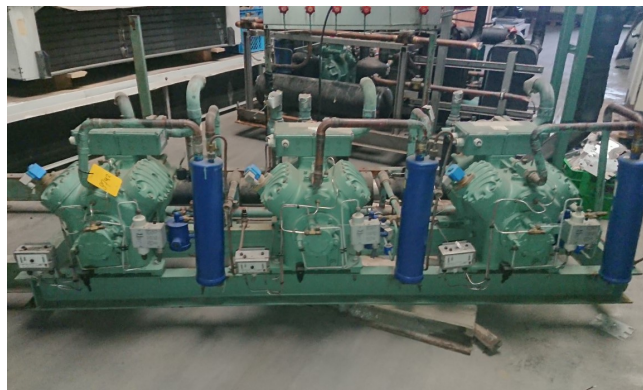


Bitzer 4H-25.2Y (x3) Cool package

Specifications

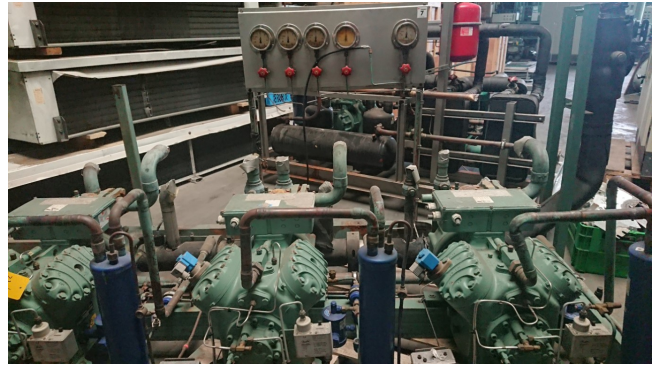
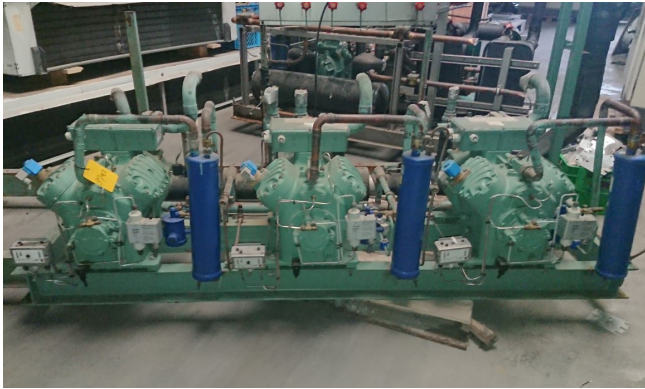
Brand	Bitzer
Type	4H-25.2Y (x3) Cool package
Refrigerant	Freon
kW at +10°C/+40°C	86.0
kW at 0°C/+40°C	59.9
kW at -5°C/+40°C	49.3
kW at -10°C/+40°C	40.1
kW at -20°C/+40°C	25.3
Unloaded Start	✓
Capacity Control	✓
Pressure safety switches	✓
Hp/Lp/Op	
Pressure gauges	✓
Hp/Lp/Op	
Oil separator	✓
Oil level system AC&R	✓
Remarks	R404a - R22 or other freon types
Package / Rack	✓
Stock	1

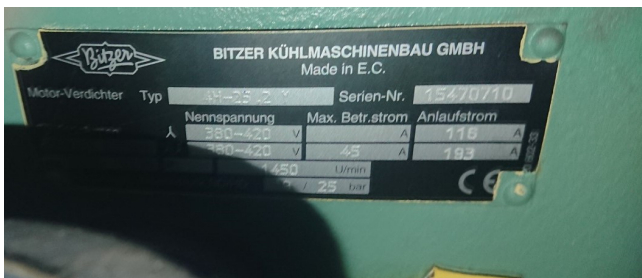
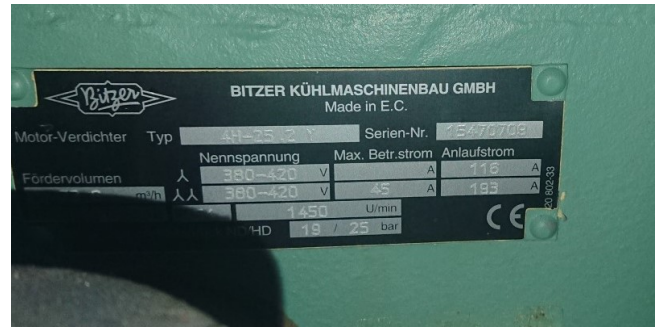


Description

Used Bitzer 4H-25.2Y (x3) Cool package

Used compressor unit Bitzer 4H-25.2 (x3) Semi-hermetic Reciprocating Compressor and consisting components. Our capacity table is based on Freon. You can also use this compressor on alternative types of Freon. For all the other specs, see the picture of the manufacturer model plate or the attached pdf file (if available) *Why choose for HOSBV? We're not only the largest used refrigeration specialist in Europe, but also, we deliver all equipment including an extensive test, warranty and industrial cleaning. *Optional we can also arrange the logistics.





Refrigerant	R22	Power supply	400V-3SUF2
Reference temperature	Dew point temp.	Capacity control	100%
Liq. subc. (in condenser)	0 K	Useful superheat	100%
Result			
Q [W]	Cooling capacity	COP [-]	COP/EEER
Q _{ev} [W]	Evaporator capacity	m [kg/h]	Mass flow
P [kW]	Power input	Op.	Operating mode
I [A]	Current	th [°C]	Discharge gas temp. w/o cooling
Q _c [W]	Condenser capacity		

tc	to	10°C	5°C	0°C	-5°C	-10°C	-15°C	-20°C	-25°C
40°C	Q [W]	86096	72133	59956	49356	40154	32198	25351	19492
	Q _{ev} [W]	86096	72133	59956	49356	40154	32198	25351	19492
	P [kW]	16.65	16.31	15.71	14.89	13.88	12.73	11.47	10.14
	I [A]	29.4	28.9	28.0	26.9	25.5	24.0	22.3	20.7
	Q _c [W]	102744	88445	75669	64245	54035	44924	36817	29629
	COP [-]	5.17	4.42	3.82	3.31	2.89	2.53	2.21	1.92
	m [kg/h]	1855	1537	1266	1035	836	667	523	400
	Op.	Standard	Standard	Standard	Standard	Standard	Standard	Standard	Standard
	th [°C]	75.8	84.8	94.3	104.3	115.2	127.0	0	0
	th [°C]	75.8	84.8	94.3	104.3	115.2	127.0	0	0
40°C	Q [W]	86096	72133	59956	49356	40154	32198	25351	19492
	Q _{ev} [W]	86096	72133	59956	49356	40154	32198	25351	19492
	P [kW]	16.65	16.31	15.71	14.89	13.88	12.73	11.47	10.14
	I [A]	29.4	28.9	28.0	26.9	25.5	24.0	22.3	20.7
	Q _c [W]	102744	88445	75669	64245	54035	44924	36817	29629
	COP [-]	5.17	4.42	3.82	3.31	2.89	2.53	2.21	1.92
	m [kg/h]	1855	1537	1266	1035	836	667	523	400
	Op.	Standard	Standard	Standard	Standard	Standard	Standard	Standard	Standard
	th [°C]	75.8	84.8	94.3	104.3	115.2	127.0	0	0
	th [°C]	75.8	84.8	94.3	104.3	115.2	127.0	0	0
50°C	Q [W]	76745	64075	53016	43384	35025	27803	21597	16299
	Q _{ev} [W]	76745	64075	53016	43384	35025	27803	21597	16299
	P [kW]	19.85	19.05	18.01	16.78	15.39	13.89	12.31	10.71
	I [A]	34.1	32.9	31.4	29.5	27.6	25.5	23.4	21.4
	Q _c [W]	96593	83124	71027	60161	50413	41689	33909	27006
	COP [-]	3.87	3.36	2.94	2.59	2.28	2.00	1.75	1.52
	m [kg/h]	1799	1485	1216	987	791	624	483	363
	Op.	Standard	Standard	Standard	Standard	Standard	Standard	Standard	Standard
	th [°C]	90.0	99.3	109.1	119.7	131.2	0	0	0
	th [°C]	90.0	99.3	109.1	119.7	131.2	0	0	0

— No calculation possible (see message in single point selection)
*According to EN12900 (20°C suction gas temp., 0K liquid subcooling)

Application Limits 100% 4HE-25

